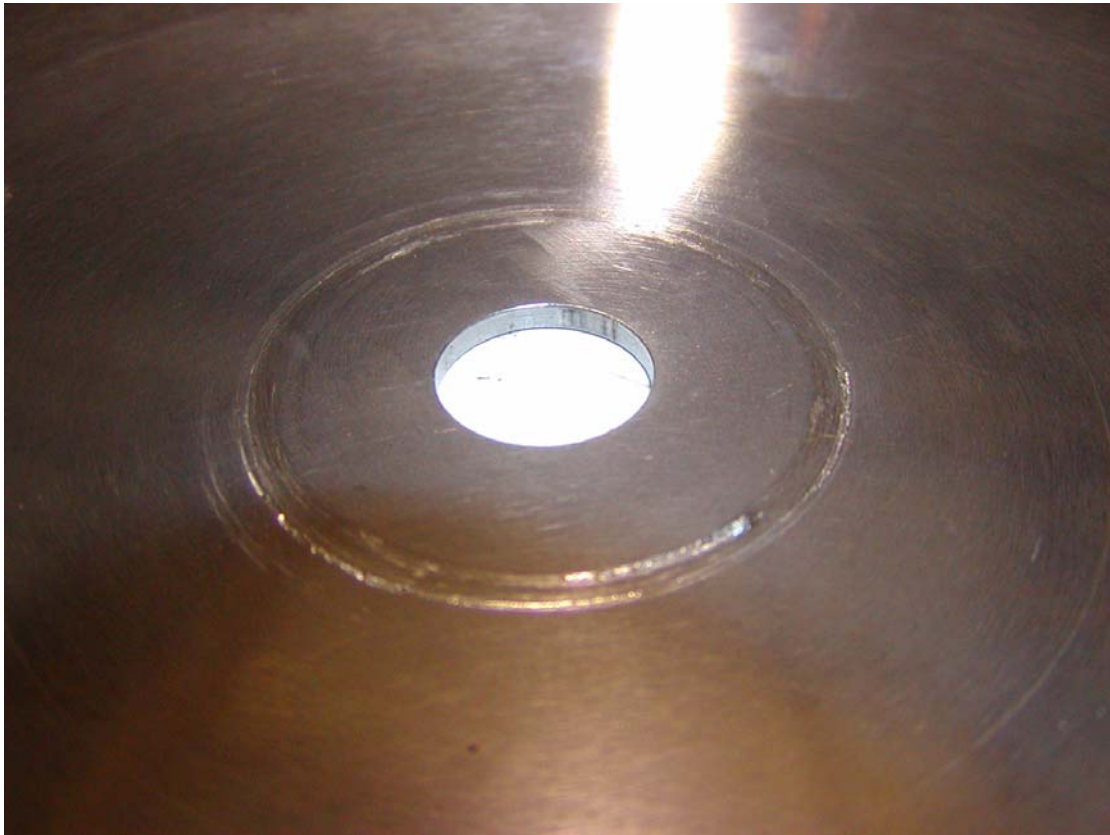


TECH TIPS

Free Technical information from Cook's Sharpening Service to help you get the most out of your cutting tools.

Check Your Saw Collars



When saw collars get damaged or if the arbor nut is not tightened adequately, the saw blade can be damaged or ruined. Make sure that the collars on your saw are smooth, clean, and properly tightened. Blades that are allowed to spin on the arbor can also ruin your saw's arbor.

To get more free ***TECH TIPS*** visit
<http://www.cookssharpener.com>